

# FTP Installation

In order to install FTP and connect to it successfully, two processes need to be followed subsequently. To connect to FTP, client would be required to connect to the exchange network as a pre-requisite and to connect to the exchange network, VPN needs to be installed.

The document will show you the whole process in two sub-processes.

## Process 1 – Installing VPN

Step 1 – Open [www.icexindia.com](http://www.icexindia.com) and click on the right most option “Exchange Downloads”, as pointed out in the figure 1.1,



Figure 1.1

Step 2 – Download the VPN client software, as pointed out in the figure 1.2, save the .exe file on the local computer and install the application.

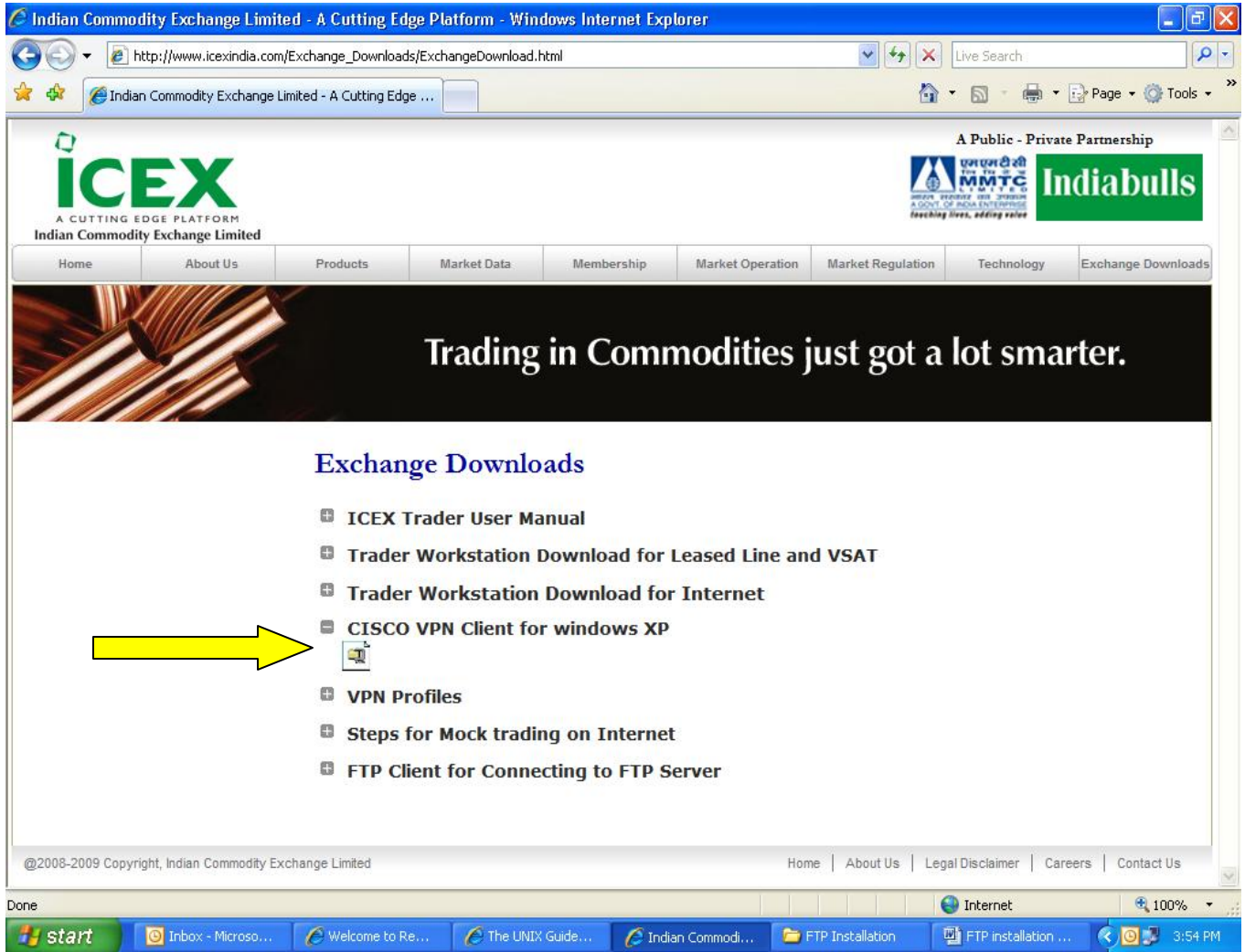


Figure 1.2

Step 3 – Install the VPN software on the computer, after installing it you will get an icon on your desktop same as pointed in the figure 1.3.



Figure 1.3

Step 4 – Open [www.icexindia.com](http://www.icexindia.com) & download vpn profile as pointed in the figure 1.4 below and save it on the computer(it will be a zip file, unzip and save the .pcf file).

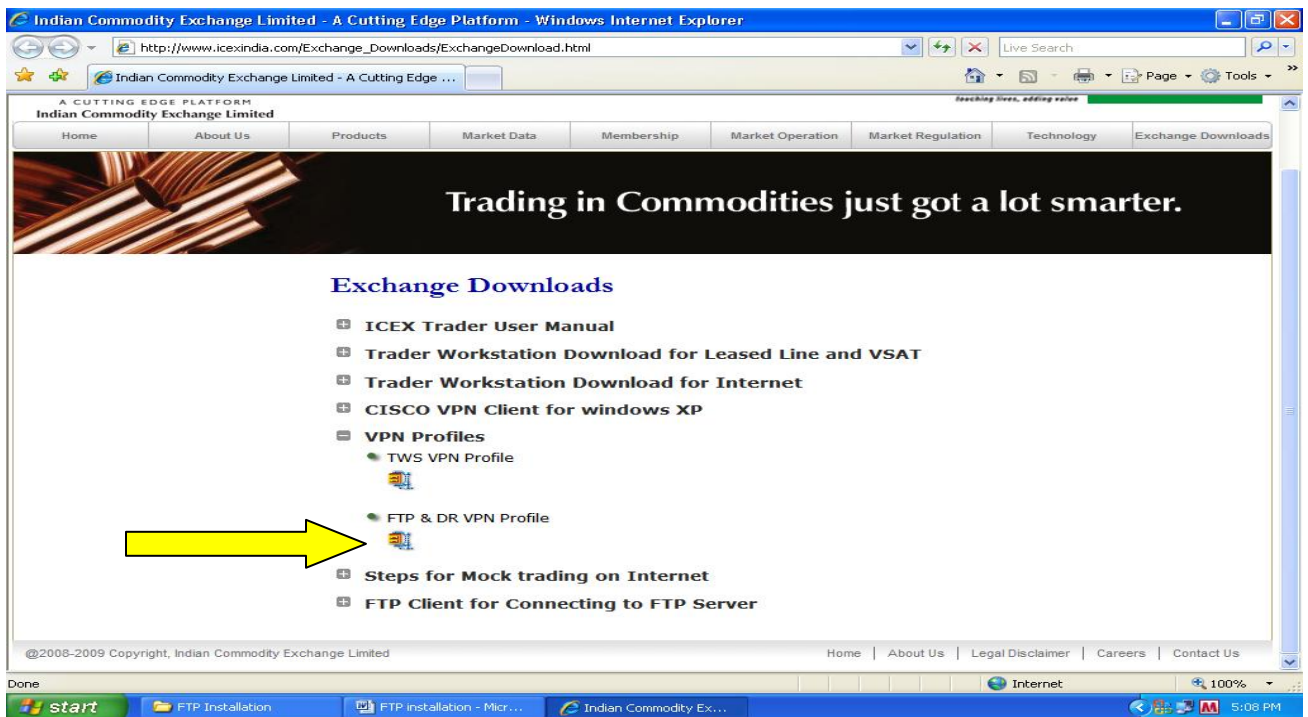
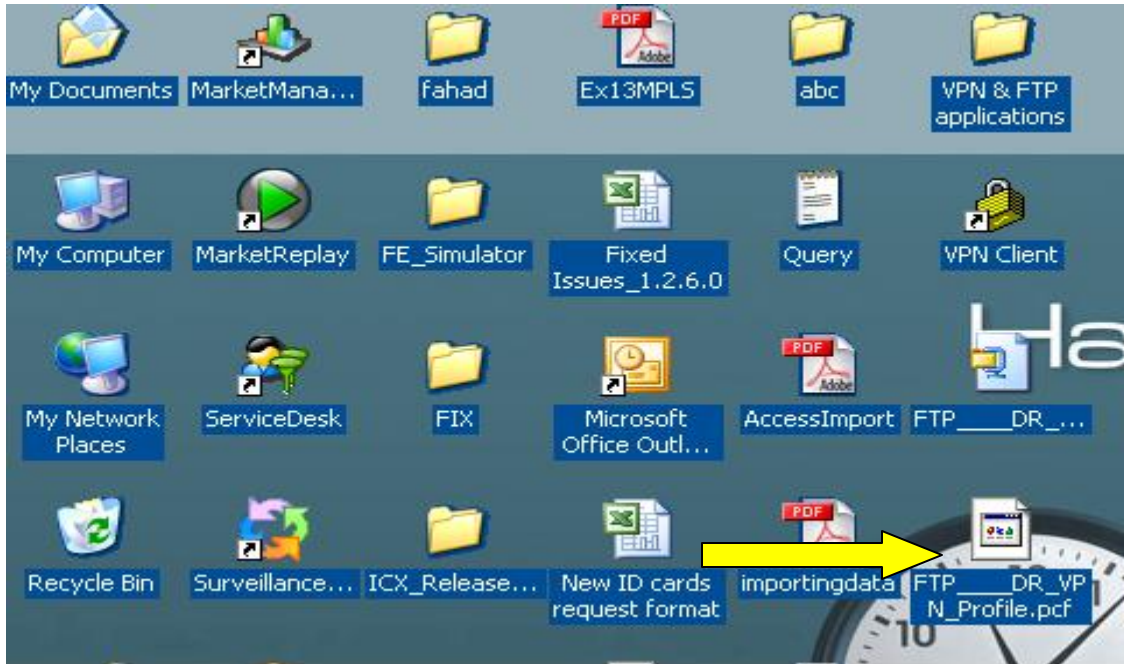


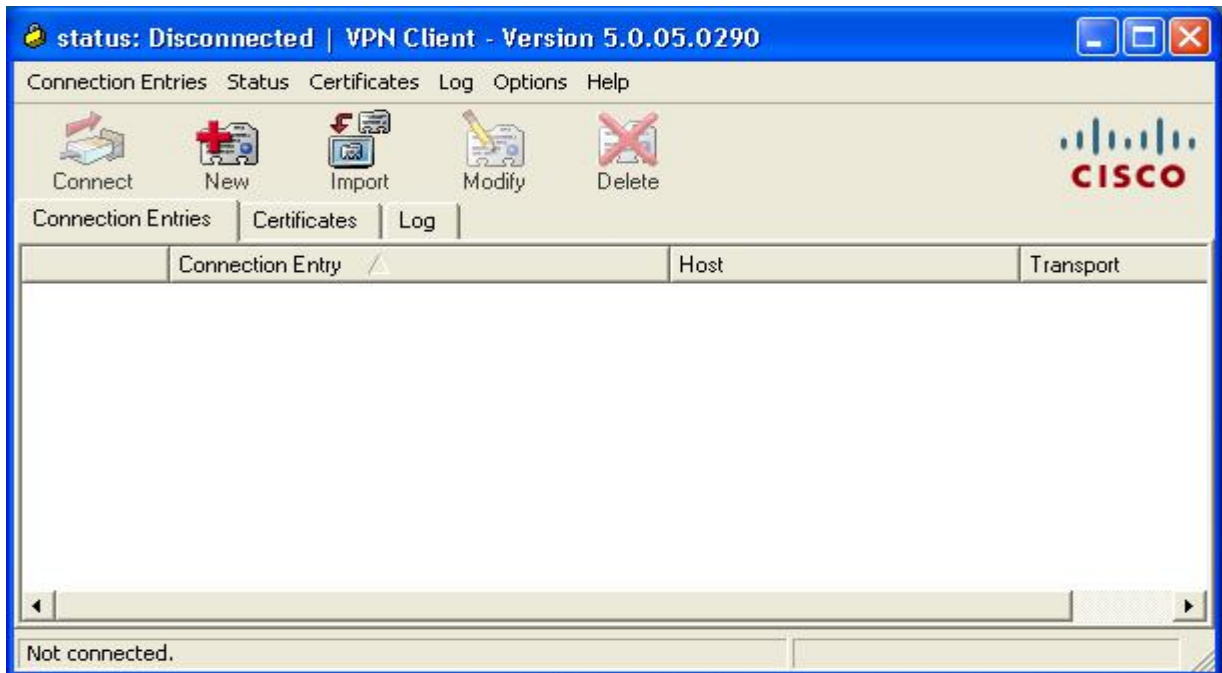
Figure 1.4

The file unzipped file will look like the one as pointed in the figure 1.5,



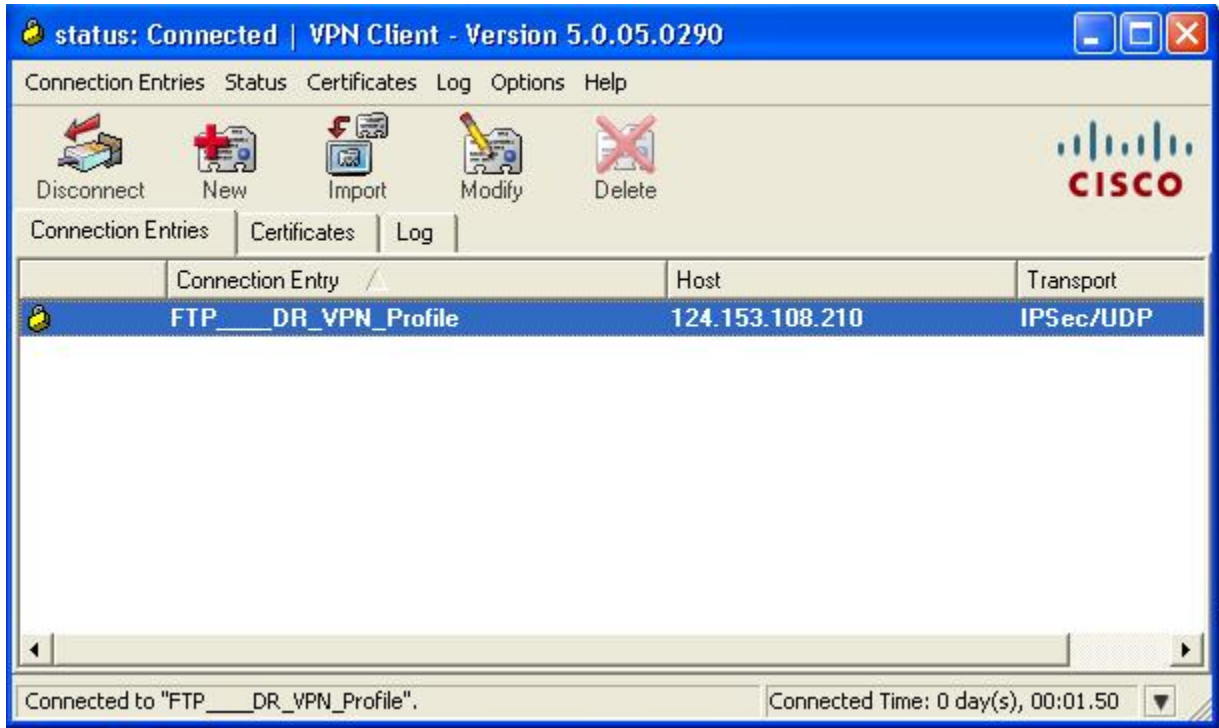
**Figure 1.5**

Step 5 – Open the VPN client by clicking on the link specified in figure 1.3 and you will get the window shown in figure 1.6,



**Figure 1.6**

Click on import and give the source path of the .pcf file as specified above in figure 1.5, select the specified file option and click on connect, enter the user name and password provided by ICEX. VPN would be connected and it will show you the window as specified in figure 1.7,



**Figure 1.7**

**Process 1 over, VPN connected.**

## Process 2 – Installing FTP

Step 1 – From the Icx website shown in Figure 1.1, click on exchange downloads and download FTP client software as pointed in figure 2.1,



Figure 2.1

Step 2- Install the FTP client software on the computer, after installing it you will get an icon on your desktop same as pointed in the figure 2.2,

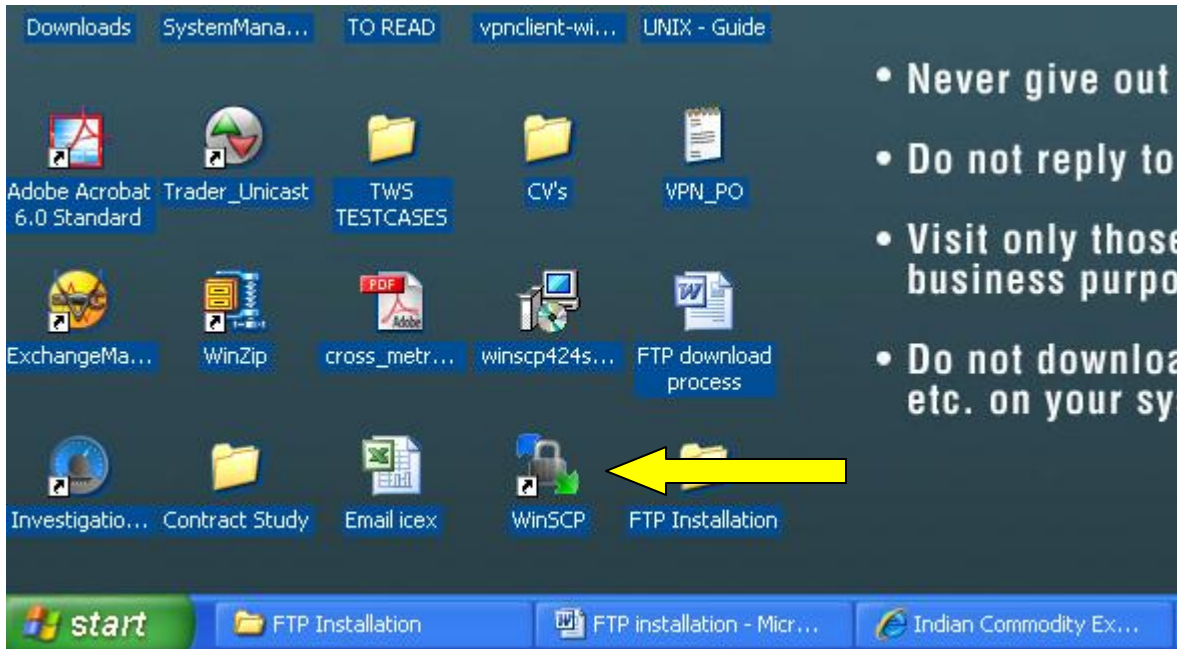


Figure 2.2

Step 3 – Click on the icon specified in figure 2.2 and you will get a window shown in figure 2.3,

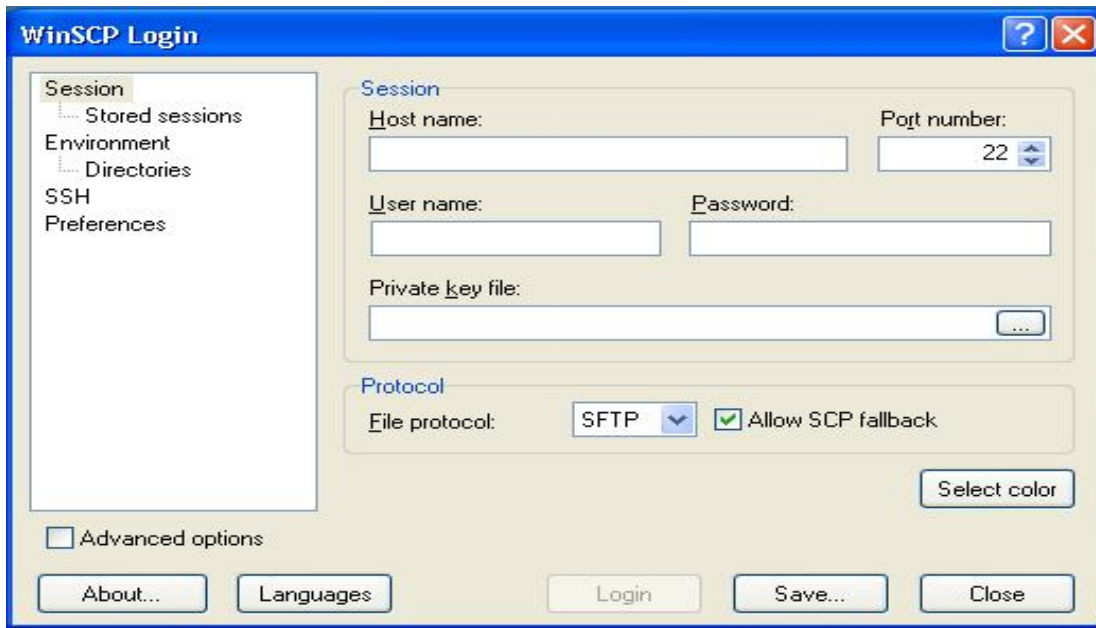


Figure 2.3

Step 4 – Enter the following details in the login window shown in figure 2.4,

**Host name – 10.167.11.53**

**User name – Provided by ICEX**

**Password – Provided by ICEX**

**File Protocol – Select FTP from the drop down list**



**Figure 2.4**

Step 5 – Fill in all the details and click on “Login”. The FTP window will be open for you, as shown in figure 2.5,

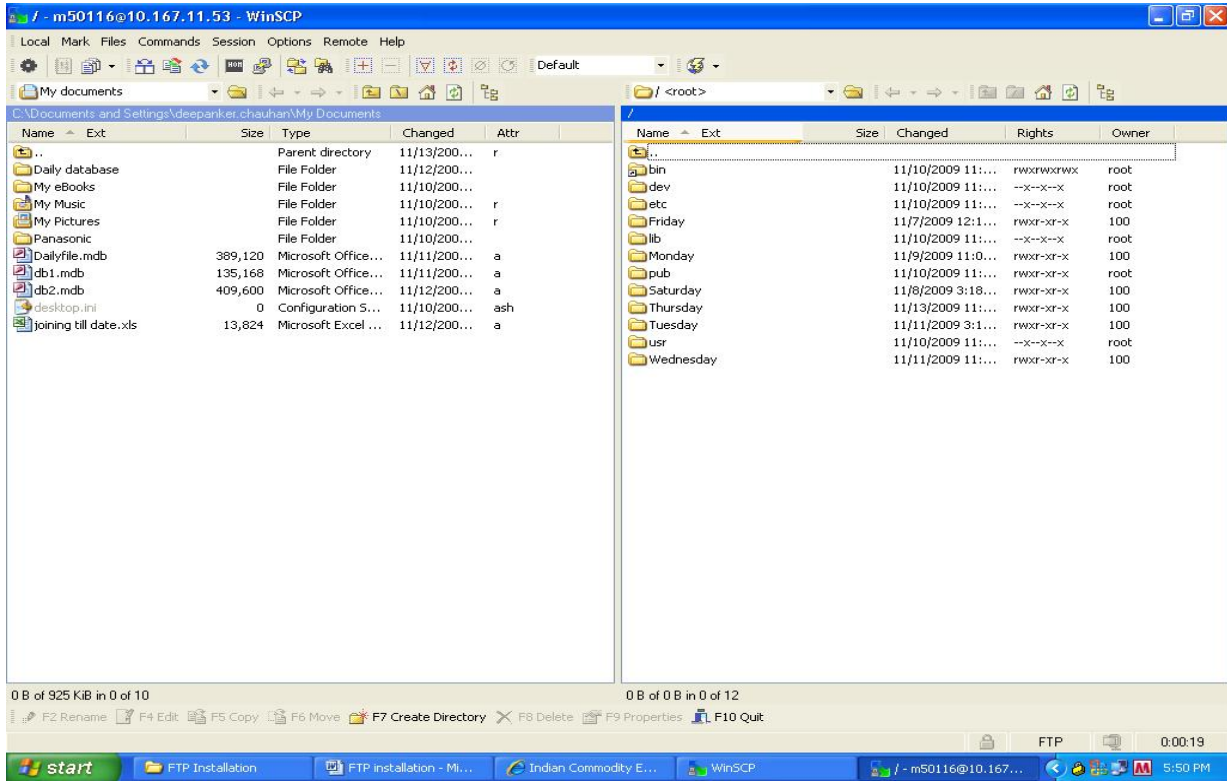


Figure 2.5

In the FTP logged in window, left partition represents your local computer and the right partition represents the exchange FTP server, from where the clients will be able to access their files.