

# FTP Installation

**FTP installation – FTP needs to be connected in order to let the members access their trading data from the exchange server.**

Step 1 – Open the ICEX website, (www.icexindia.com) and click on the right most link, “Exchange Downloads” as pointed in the figure 1.1,



Figure 1.1

Step 2 – From the Icx website shown in Figure 1.1, click on exchange downloads and download FTP client software as pointed in figure 1.2,



Figure 1.2

Step 3- Install the FTP client software on the computer, after installing it you will get an icon on your desktop same as pointed in the figure 1.3,

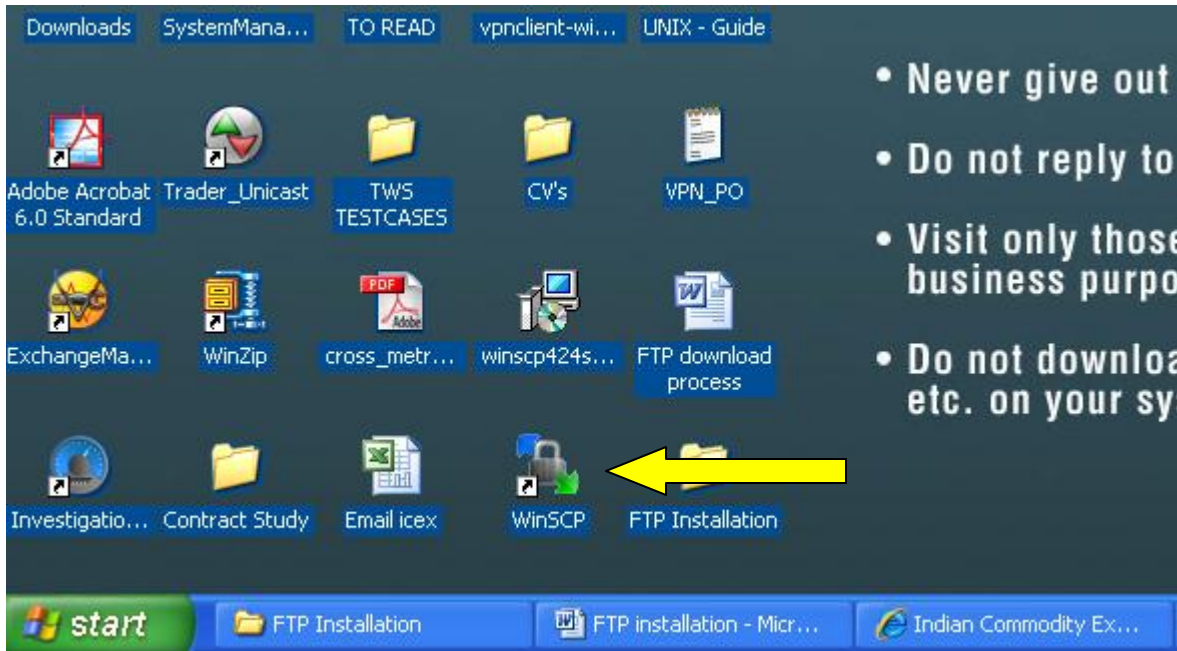


Figure 1.3

Step 4 – Click on the icon specified in figure 1.3 and you will get a window shown in figure 1.4,

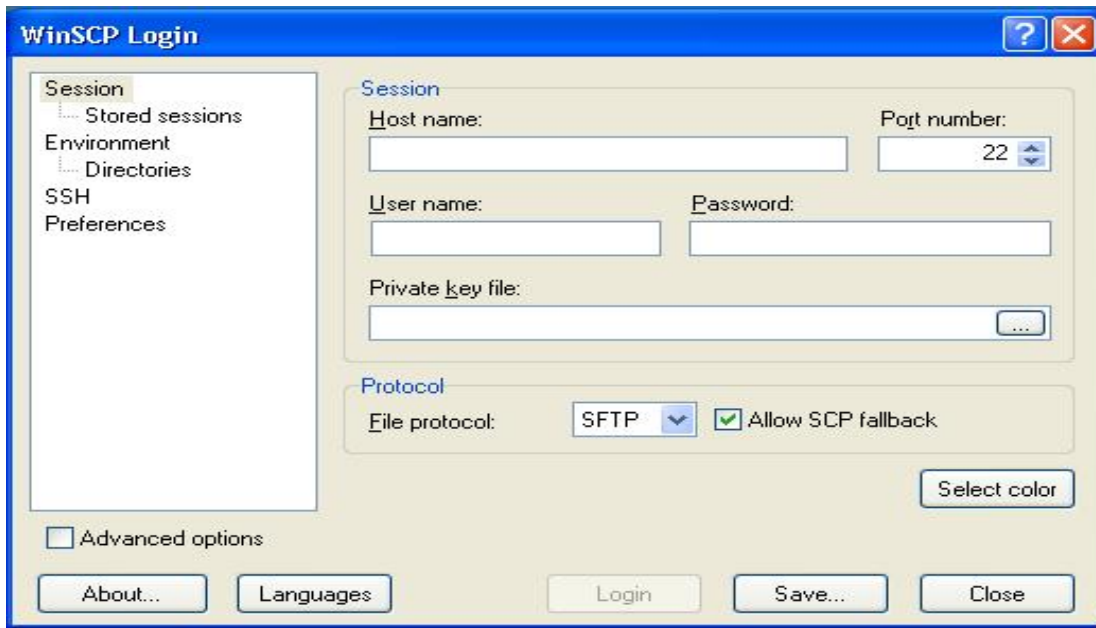


Figure 1.4

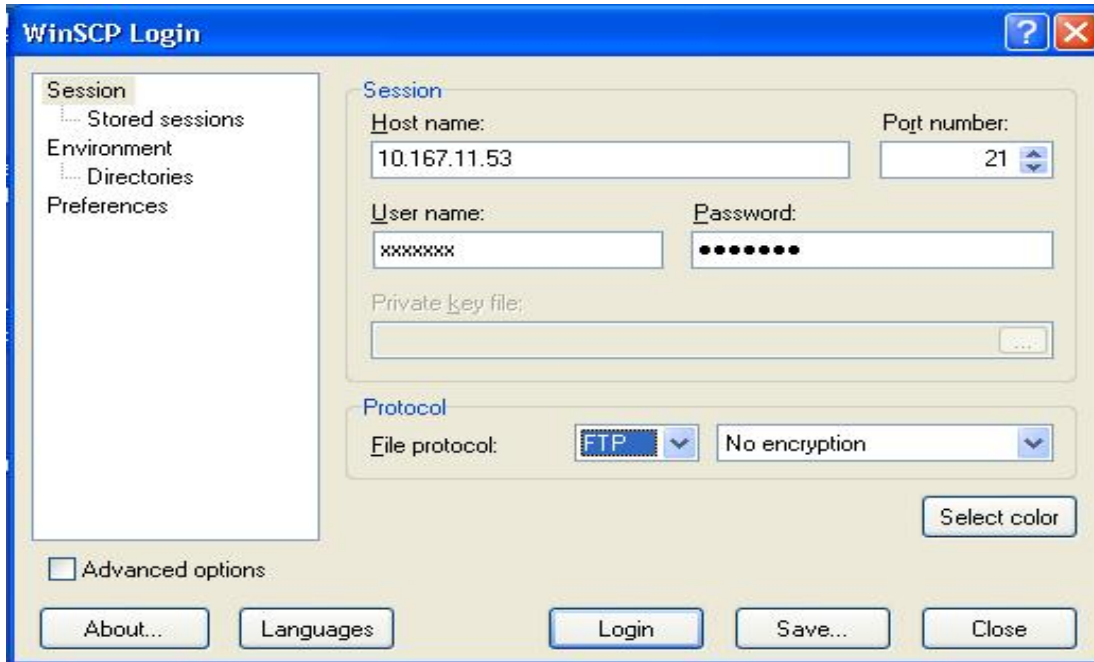
Step 5 – Enter the following details in the login window shown in figure 1.5,

**Host name – 10.167.11.53**

**User name – Provided by ICEX**

**Password – Provided by ICEX**

**File Protocol – Select FTP from the drop down list**



The image shows the WinSCP Login dialog box. It has a blue title bar with the text "WinSCP Login" and standard window control buttons (help, close). On the left is a sidebar with a tree view containing "Session", "Stored sessions", "Environment", "Directories", and "Preferences". The main area is divided into two sections: "Session" and "Protocol".

**Session section:**

- Host name:** Text box containing "10.167.11.53".
- Port number:** Spin box set to "21".
- User name:** Text box containing "xxxxxxx".
- Password:** Text box containing ".....".
- Private key file:** Text box with a browse button ("...").

**Protocol section:**

- File protocol:** Drop-down menu set to "FTP".
- Encryption:** Drop-down menu set to "No encryption".

At the bottom right of the main area is a "Select color" button. At the bottom left is a checkbox for "Advanced options" which is unchecked. At the bottom are five buttons: "About...", "Languages", "Login", "Save...", and "Close".

**Figure 1.5**

Step 6 – Fill in all the details and click on “Login”. The FTP window will be open for you, as shown in figure 1.6,

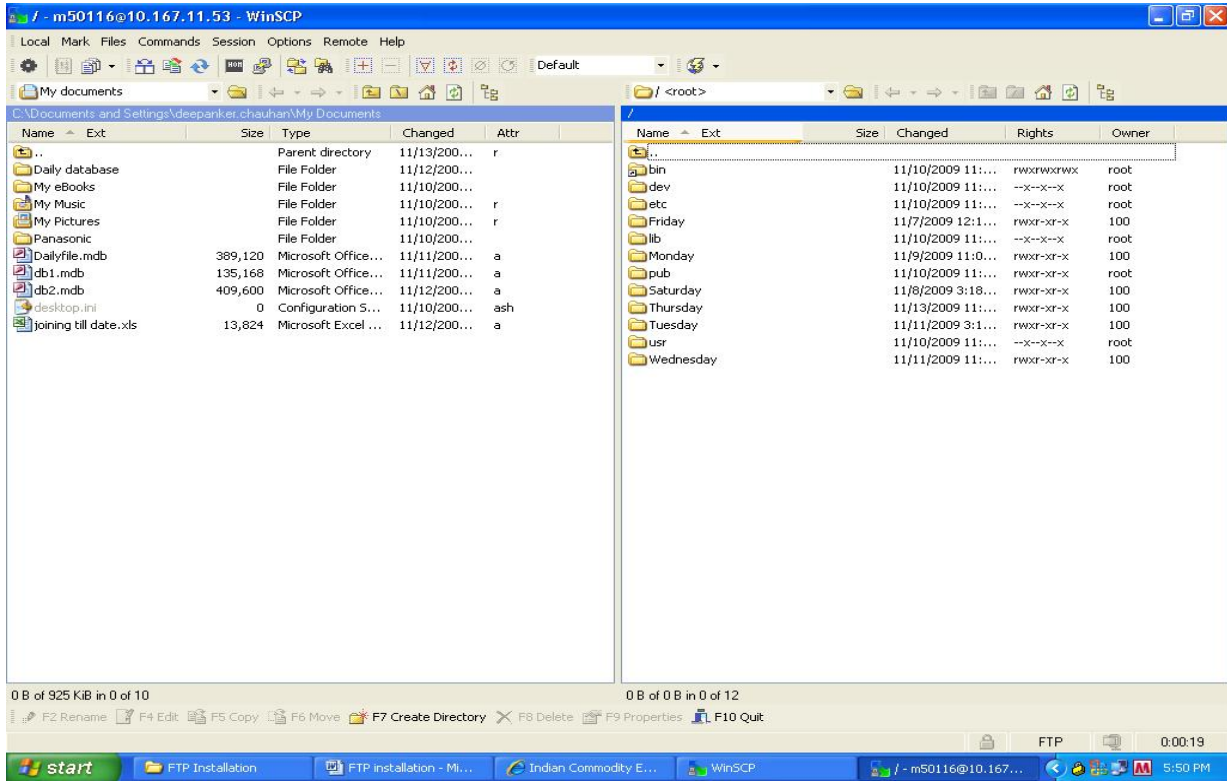


Figure 1.6

In the FTP logged in window, left partition represents your local computer and the right partition represents the exchange FTP server, from where the clients will be able to access their files.